



COTWALL END PRIMARY SCHOOL CHILD PROTECTION POLICY 2022-23

Approved by:

C Williams

Date: September 2022

Last reviewed on:

[Date]

Next review due by:

[Date]

1. Purpose and Aims

The school aims to ensure that:

- Appropriate action is taken in a timely manner to safeguard and promote children's welfare
- All staff are aware of their statutory responsibilities with respect to safeguarding
- Staff are properly training in recognising and reporting safeguarding issues

Some children have an increased risk of abuse, and additional barriers can exist for some children with respect to recognising or disclosing it. We are committed to anti-discriminatory practice and recognise children's diverse circumstances. We ensure that all children have the same protection, regardless of any barriers they may face.

We give special consideration to children who:

- Have special educational needs (SEN) or disabilities
- Are young carers
- May experience discrimination due to their race, ethnicity, religion, LGBTQ+, gender identification or sexuality
- Have English as an additional language
- Are known to be living in difficult situations – for example, temporary accommodation or where there are issues such as substance abuse or domestic violence
- Are at risk of FGM, sexual and criminal exploitation, forced marriage, or radicalisation
- Are asylum seekers
- Are at risk due to either their own or a family member's mental health needs
- Are Children in Care or previously Children in Care

2. Statutory Framework

This policy is based on the Department for Education's statutory guidance [Keeping Children Safe in Education \(2022\)](#) and [Working Together to Safeguard Children \(2018\)](#), and the [Governance Handbook](#). We comply with this guidance and the arrangements agreed and published by our 3 local safeguarding partners.

This policy is also based on the following legislation:

- Section 175 of the [Education Act 2002](#), which places a duty on schools and local authorities to safeguard and promote the welfare of pupils
- [The School Staffing \(England\) Regulations 2009](#), which set out what must be recorded on the single central record and the requirement for at least one person conducting an interview to be trained in safer recruitment techniques
- [The Children Act 1989](#) (and [2004 amendment](#)), which provides a framework for the care and protection of children
- Section 5B(11) of the Female Genital Mutilation Act 2003, as inserted by section 74 of the [Serious Crime Act 2015](#), which places a statutory duty on teachers to report to the police where they discover that female genital mutilation (FGM) appears to have been carried out on a girl under 18
- [Statutory guidance on FGM](#), which sets out responsibilities with regards to safeguarding and supporting girls affected by FGM
- [The Rehabilitation of Offenders Act 1974](#), which outlines when people with criminal convictions can work with children

- Schedule 4 of the [Safeguarding Vulnerable Groups Act 2006](#), which defines what 'regulated activity' is in relation to children
- [Statutory guidance on the Prevent duty](#), which explains schools' duties under the Counter-Terrorism and Security Act 2015 with respect to protecting people from the risk of radicalisation and extremism

Information Sharing (2018)

https://assets.publishing.service.gov.uk/government/uploads/system/uploads/attachment_data/file/721581/Information_sharing_advice_practitioners_safeguarding_services.pdf

- The [Childcare \(Disqualification\) and Childcare \(Early Years Provision Free of Charge\) \(Extended Entitlement\) \(Amendment\) Regulations 2018](#) (referred to in this policy as the 2018 Childcare Disqualification Regulations) and [Childcare Act 2006](#), which set out who is disqualified from working with children
- This policy also meets requirements relating to safeguarding and welfare in the [Early years foundation stage statutory framework \(EYFS\) March 2021](#)

<https://safeguarding.dudley.gov.uk/safeguarding/partnership/meetings/safeguarding-children-partnership-group/> This is the link for the local safeguarding Multi-Agency Procedures, which the school operates under.

3. The Designated Safeguarding Lead (DSL)

The DSL is a member of the senior leadership team. Our DSL is Mrs Claire Williams. The DSL takes lead responsibility for child protection and wider safeguarding.

During term time, the DSL will be available during school hours for staff to discuss any safeguarding concerns. Outside of school hours the DSL is available via email or her own personal mobile number which is known to members of staff.

When the DSL is absent, the deputies – Mrs Sue Sullivan (Deputy Head) and Mrs Gemma Wilkes (Assistant Head and SENDCO) – will act as cover.

Either the DSL or Deputy DSLs will be available to contact out of school hours and during school holidays using their personal mobile numbers. In the event of none of these being available, contact should be made with MASH 03005550050, Out of Hours Emergency Duty Team 03005558574 or dial 999 if a child is in immediate danger.

The DSL will be given the time, funding, training, resources and support to:

- Work closely with teachers and share information & provide advice and support to other staff on child welfare and safeguarding and child protection matters
- Sets out procedures so that staff promptly share their safeguarding concerns in writing
- Help promote educational outcomes by sharing the information about the welfare, safeguarding and child protection issues that children, including children with a social worker, are experiencing, or have experienced, with teachers and school and college leadership staff. Their role could include ensuring that the school or college, and their staff, know who these children are, understand their academic progress and attainment and maintain a culture of high aspirations for this cohort; supporting teaching staff to identify the challenges that children in this group might face and the additional academic support and adjustments that they could make to best support these children.
- Refer cases of suspected abuse and neglect to the local authority children's social care as required and support staff who make referrals to local authority children's social care.
- Refer cases to the Channel programme where there is a radicalisation concern as required and support staff who make referrals to Channel programme.

- Refer cases where a person is dismissed or left due to risk/harm to a child to the Disclosure and Barring Service as required and
- Refer cases where a crime may have been committed to the Police
- Take part in strategy discussions and inter-agency meetings and/or support other staff to do so
- Contribute to the assessment of children, particularly in relation to Early Help
- Work closely with Mental Health Leads
- Refer suspected cases, as appropriate, to the relevant body (local authority children's social care, Channel Panel, and/or police), and support staff who make such referrals directly
- The DSL will also keep the headteacher informed of any issues and liaise with local authority case managers and designated officers (LADO) for safeguarding and child protection concerns as appropriate.

The full responsibilities of the DSL and deputies are set out in their job description.

4. The Headteacher, Governing Body, Trustees, Proprietors

The Headteacher is responsible for the implementation of this policy, including:

- Ensuring that staff (including temporary & supply staff) and volunteers are informed of our systems which support safeguarding, including this policy, as part of their induction
- Communicating this policy to parents when their child joins the school and via the school website
- Ensuring that the DSL has appropriate time, funding, training and resources, and that there is always adequate cover if the DSL is absent
- Ensuring that all staff undertake appropriate safeguarding and child protection training and update this regularly
- Acting as the 'case manager' in the event of an allegation of abuse made against another member of staff or volunteer, where appropriate (see KCSiE Part 4, p81 for further information)
- Refer cases where a person is dismissed or has left due to risk/harm to a child, to the Disclosure and Barring Services/Teaching Regulatory Agency (TRA) as required.
- Complete appropriate safeguarding and child protection (including online) training.
- Ensuring the relevant staffing ratios are met, where applicable
- Making sure each child in the Early Years Foundation Stage is assigned a key person

The Governing body will approve this policy at each review, ensure it complies with the law and hold the headteacher to account for its implementation.

The Governing Body will appoint a lead governor, Mr Christopher Skitt, to monitor the effectiveness of this policy in conjunction with the full governing board. This is always a different person from the DSL.

The Chair of governors, Mr Christopher Skitt, will act as the 'case manager' if an allegation of abuse is made against the headteacher, where appropriate (see appendix 2).

All Governors have read and understood Keeping Children Safe in Education 2022. (Part Two of this policy has information on how governors are supported to fulfil their role.)

5. Safeguarding Policies and Procedures/Legal Responsibilities and duty to share information

Our safeguarding responsibilities include:

- › Protecting children from maltreatment
- › Preventing impairment of children's mental and physical health or development
- › Ensuring that children grow up in circumstances consistent with the provision of safe and effective care
- › Taking action to enable all children to have the best outcomes

Child protection is part of this definition and refers to activities undertaken to prevent children suffering, or being likely to suffer, significant harm.

Abuse is a form of maltreatment of a child and may involve inflicting harm or failing to act to prevent harm. All members of staff receive annual safeguarding training which covers the types of abuse.

Neglect is a form of abuse and is the persistent failure to meet a child's basic physical and/or psychological needs, likely to result in the serious impairment of the child's health or development.

Sexting (also known as youth produced sexual imagery) is the sharing of sexual imagery (photos or videos) by children

Children includes everyone under the age of 18.

The following three **Safeguarding Partners** are identified in Keeping Children Safe in Education (and defined in the Children Act 2004, as amended by chapter 2 of the Children and Social Work Act 2017). They will decide to work together to safeguard and promote the welfare of local children, including identifying and responding to their needs:

- › The local authority (LA)
- › A clinical commissioning group for an area within the LA
- › The chief officer of police for a police area in the LA area

Roles and Responsibilities

Safeguarding and child protection is **everyone's** responsibility. This policy applies to all staff, volunteers and governors/trustees in the school and is consistent with the procedures of the 3 safeguarding partners. Our policy and procedures also apply to extended school and off-site activities.

All staff

All staff will read and understand part 1 and Annex A of the Department for Education's statutory safeguarding guidance, [Keeping Children Safe in Education](#), and review this guidance at least annually.

All staff will be aware of:

- › Our systems which support safeguarding, including this child protection and safeguarding policy, the staff handbook and staff code of conduct, the role and identity of the designated safeguarding lead (DSL) and deputies, the relationships policy, and the safeguarding response to children who go missing from education
- › The Early Help process and their role in it, including identifying emerging problems, liaising with the DSL, and sharing information with other professionals to support early identification and assessment
- › The process for making referrals to local authority children's social care and for statutory assessments that may follow a referral, including the role they might be expected to play

- What to do if they identify a safeguarding issue or a child tells them they are being abused or neglected, including specific issues such as FGM, and how to maintain an appropriate level of confidentiality while liaising with relevant professionals
- The signs of different types of abuse and neglect, as well as specific safeguarding issues, such as child exploitation (CSE/CCE), indicators of being at risk from or involved with serious violent crime, FGM and radicalisation

All staff members will undertake safeguarding and child protection training, including online safety training, at induction, together with managing allegations and whistle-blowing procedures, to ensure they understand the school's safeguarding systems and their responsibilities, and can identify signs of possible abuse or neglect. This training will be regularly updated and will be in line with local and statutory guidelines.

All staff will have training on the government's anti-radicalisation strategy, Prevent, to enable them to identify children at risk of being drawn into terrorism and to challenge extremist ideas.

Staff will also receive regular safeguarding and child protection updates (for example, through emails, e-bulletins and staff meetings) as required, but at least annually.

Volunteers and Contractors will receive appropriate training, if applicable.

The DSL and Deputy DSLs

The DSL and Deputy DSLs will undertake child protection and safeguarding training at least every 2 years.

In addition, they will update their knowledge and skills at regular intervals and at least annually (for example, through e-bulletins, meeting other DSLs, or taking time to read and digest safeguarding developments). They will also undertake Prevent Awareness training.

Governors

All governors receive training about safeguarding, to make sure they have the knowledge and information needed to perform their functions and understand their responsibilities.

As the chair of governors may be required to act as the 'case manager' if an allegation of abuse is made against the headteacher, they receive training in managing allegations for this purpose.

Staff who have contact with pupils and families

All staff who have contact with children and families will have supervision which will provide them with support, coaching and training, promote the interests of children and allow for confidential discussions of sensitive issues.

6. Confidentiality

The school expects all members of staff to comply with Keeping Children Safe in Education 2022, Information Management Policies and the confidentiality expectations as outlined in the Staff Handbook/Code of Conduct.

The sharing information within our school, and with the 3 safeguarding partners and other agencies as required, will be on a strictly need to know basis where the sharing of the information is required in order to safeguard the child. The importance of confidentiality is stressed to all visiting students, helpers, new members of staff and other visitors as part of their induction.

You should note that:

- Timely information sharing is essential to effective safeguarding
- Fears about sharing information must not be allowed to stand in the way of the need to promote the welfare, and protect the safety, of children

- The Data Protection Act (DPA) 2018 and GDPR do not prevent, or limit, the sharing of information for the purposes of keeping children safe
- If staff need to share 'special category personal data', the DPA 2018 contains 'safeguarding of children and individuals at risk' as a processing condition that allows practitioners to share information without consent if it is not possible to gain consent, it cannot be reasonably expected that a practitioner gains consent, or if to gain consent would place a child at risk
- Staff should never promise a child that they will not tell anyone about a report of abuse, as this may not be in the child's best interests
- The government's [information sharing advice for safeguarding practitioners](#) includes 7 'golden rules' for sharing information, and will support staff who have to make decisions about sharing information
- If staff are in any doubt about sharing information, they should speak to the Designated Safeguarding Lead (or deputy)
- Confidentiality is also addressed in this policy with respect to record-keeping in section 10

7. Communication with parents

Where appropriate, we will discuss any concerns about a child with the child's parents. The DSL will normally do this in the event of a suspicion or disclosure.

Other staff will only talk to parents about any such concerns following consultation with the DSL.

If we believe that notifying the parents would increase the risk to the child, we will discuss this with the local authority children's social care team before doing so.

In the case of allegations of abuse made against other children, we will usually notify the parents of all the children involved.

8. Whole Staff Responsibilities

All Staff, volunteers and governors must follow the procedures set out below in the event of a safeguarding issue.

If a child is suffering or likely to suffer harm, or in immediate danger

Make a referral to Multi Agency Safeguarding Hub (MASH) and/or the police **immediately** if you believe a child is suffering or likely to suffer from harm, or in immediate danger. **Anyone can make a referral.**

Tell the DSL as soon as possible if you make a referral directly.

Dudley **Report it** page: <https://safeguarding.dudley.gov.uk/tell-us/>

If a child discloses a safeguarding issue to you, you should adopt the following child-centred approach:

- Listen to and believe them. Allow them time to talk freely and do not ask leading questions
- Stay calm and do not show that you are shocked or upset
- Reassure the child they have done the right thing in telling you. Do not tell them they should have told you sooner
- Explain what will happen next and that you will have to pass this information on. Do not promise to keep it a secret
- Support the child after they have completed their disclosure and ensure they continue to receive support.
- Enter your conversation as soon as possible in the child's own words onto the school's CPOMS system. Stick to the facts, and do not put your own judgement on it

- › Ensure the DSL is named in the report and submit the report onto the system to alert them. Alternatively, if appropriate, make a referral to children's social care and/or the police directly, and tell the DSL as soon as possible that you have done so.
- › Refer back to the information given and notes taken during annual safeguarding training.
- › If you have any doubts, do not hesitate to contact the DSL or Deputy DSLs for advice and support.

9. Record keeping

Copies of the School Safeguarding Records are held on CPOMS, in a secure cloud based storage system.

- We will hold records in line with our records retention schedule.
 - All safeguarding concerns, discussions, decisions made and the reasons for those decisions, must be recorded on CPOMS. If you are in any doubt about whether to record something, discuss it with the DSL.
 - Non-confidential records will be easily accessible and available. Confidential information and records will be held securely and only available to those who have a right or professional need to see them.
 - All members of staff need to read and sign to confirm that they have read and understood the confidential Safeguarding files appertaining to the pupils that they are going to teach (paper copy and CPOMS).
 - Safeguarding records relating to individual children will be retained for a reasonable period after they have left the school. These will be forwarded to their new school after transfer. This is done in person, or through special signed-for postal delivery, where in-person delivery is not practicable.
 - If a child for whom the school has, or has had, safeguarding concerns moves to another school, the DSL will ensure that their safeguarding & child protection file is forwarded promptly and securely, and separately from the main pupil file. In addition, if the concerns are significant or complex, and/or social services are involved, the DSL will speak to the DSL of the receiving school and provide information (using the pupil safeguarding form) to enable them to have time to make any necessary preparations to ensure the safety of the child.
- › Records are currently a mixture of paper based and CPOMS-based.
 - › Paper Records are held in the Headteacher's Office
 - › Records are secured in a locked filing cabinet, the Head and Deputy Headteacher along with School Business Manager only have copies of these keys
 - › Information will be retained until it has been passed onto a child's secondary school or new school in the event of transferal during the Primary Phase. If a child leaves the school for elective home education and there are records of Safeguarding concerns, the relevant body within the local authority will be made aware of these concerns and paperwork passed on accordingly
 - › The school maintains Dudley safeguarding guidance when sharing information with other agencies and adheres to Data Protection and GDPR.
 - › The school fully adheres to the Safer Recruitment requirements and carefully examines all applications for gaps in employment, etc. The school keeps an up to date SCR and this regularly checked by the Chair of Governors.
 - › All prospective employees are subject to passing enhanced DBS checks.

If you have concerns about a child (as opposed to believing a child is suffering or likely to suffer from harm or is in immediate danger) Figure 1 (page 10) illustrates the procedure to follow if you have any concerns about a child's welfare.

Where possible, speak to the DSL first to agree a course of action.

If in exceptional circumstances the DSL is not available, this should not delay appropriate action being taken. Speak to a member of the Senior Leadership Team and/or take advice from Local Authority Children's Social Care. Referrals should be made by completing a Multi-Agency Referral Form (or MARF) and returning it to MASH_Referrals@dudley.gov.uk or contact 0300 555 0050. If a referral to Dudley Exploitation Hub is required, this is done via CS.Hub@dudley.gov.uk

Make a referral to Local Authority Children's Social Care directly, if appropriate (see 'Referral' below). Share any action taken with the DSL as soon as possible.

You can also seek advice at any time from the NSPCC helpline on 0808 800 5000. Share details of any actions you take with the DSL as soon as practically possible.

Referral

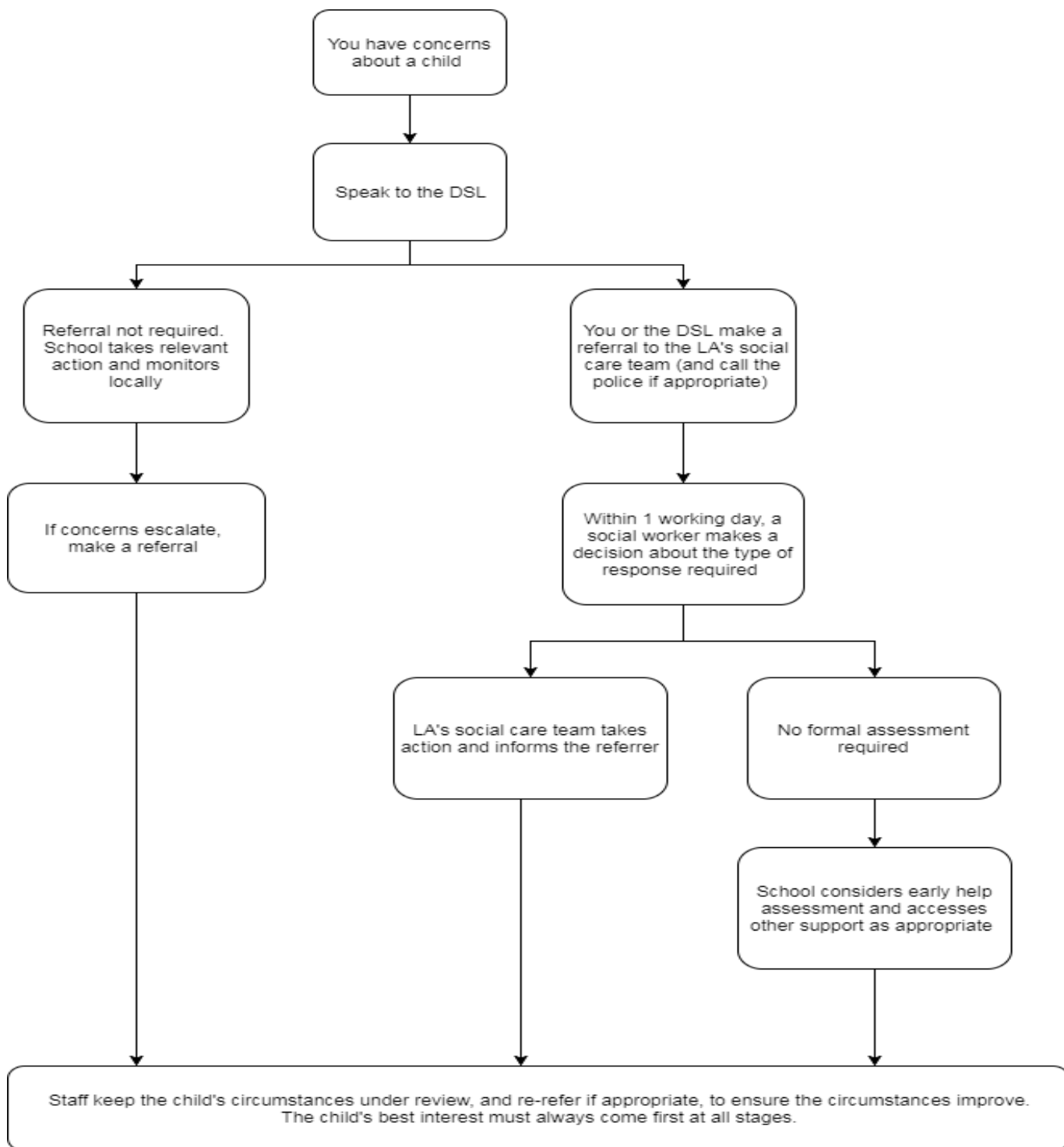
If it is appropriate to refer the case to Local Authority Children's Social Care or the Police, the DSL will make the referral or support you to do so. If you make a referral directly you must tell the DSL as soon as possible.

The Local Authority will decide within 1 working day of a referral about what course of action to take and will let the person who made the referral know the outcome. The DSL or person who made the referral must follow up with the Local Authority if this information is not made available, and ensure outcomes are properly recorded.

If the child's situation does not seem to be improving after the referral, the DSL or person who made the referral must follow local escalation procedures to ensure their concerns have been addressed and that the child's situation improves.

Figure 1: procedure if you have concerns about a child's welfare (as opposed to believing a child is suffering or likely to suffer from harm, or in immediate danger)

(Note – if the DSL is unavailable, this should not delay action.)



10. Dudley’s Thresholds and Early Help

If early help is appropriate, the DSL will generally lead on liaising with other agencies and setting up an inter-agency assessment as appropriate. Staff may be required to support other agencies and professionals in an early help assessment, in some cases acting as the lead practitioner.

The DSL will keep the case under constant review and the school will consider a referral to local authority children’s social care if the situation does not seem to be improving. Timelines of interventions will be monitored and reviewed.

Level 1 - No referral is required. Professionals should contact Dudley's Family Information Service on 01384 814398 to obtain information about support available for children, young people and families.

Level 2 - Partner agencies should complete their own internal assessment as appropriate and forward this to the relevant Family Centre. Alternatively, an Early Help Assessment can be completed and forwarded to the appropriate Family Centre Cluster.

Level 3 - Referrals should be made by completing an Early Help Assessment and forwarding it to the appropriate Family Centre Cluster.

View more information on [*Dudley Early Help*](#).

<https://dudleysafeguarding.org.uk/children/professionals-working-with-children/dudley-early-help/>

11. When to be concerned

All staff, especially the Designated Safeguarding Lead (and deputies) should consider whether children are at risk of abuse or exploitation in situations outside their families. Extra-familial harms take a variety of different forms and children can be vulnerable to multiple harms including (but not limited to) **sexual abuse (including harassment and exploitation), domestic abuse in their own intimate relationships (teenage relationship abuse)**, criminal exploitation, serious youth violence, county lines and radicalisation.

Abuse: a form of maltreatment of a child. Somebody may abuse or neglect a child by inflicting harm or failing to act to prevent harm. **Harm can include ill-treatment that is not physical, as well as the impact of witnessing ill-treatment of others. This can be particularly relevant for example, in relation to the impact on children of all forms of domestic abuse.** Children may be abused in a family or in an institutional or community setting by those known to them, or more rarely by others. Abuse can take place wholly online, or technology may be used to facilitate off-line abuse. Children may be abused by an adult or adults, or by another child or children.

Signs and Symptoms of Abuse

Abuse, including neglect, and safeguarding issues are rarely standalone events that can be covered by one definition or label. In most cases, multiple issues will overlap.

Physical abuse may involve hitting, shaking, throwing, poisoning, burning or scalding, drowning, suffocating or otherwise causing physical harm to a child. Physical harm may also be caused when a parent or carer fabricates the symptoms of, or deliberately induces, illness in a child.

Emotional abuse is the persistent emotional maltreatment of a child such as to cause severe and adverse effects on the child's emotional development. Some level of emotional abuse is involved in all types of maltreatment of a child, although it may occur alone.

Emotional abuse may involve:

- Conveying to a child that they are worthless or unloved, inadequate, or valued only insofar as they meet the needs of another person
- Not giving the child opportunities to express their views, deliberately silencing them or 'making fun' of what they say or how they communicate
- Age or developmentally inappropriate expectations being imposed on children. These may include interactions that are beyond a child's developmental capability, as well as overprotection and limitation of exploration and learning, or preventing the child participating in normal social interaction
- Seeing or hearing the ill-treatment of another
- Serious bullying (including cyberbullying), causing children frequently to feel frightened or in danger, or the exploitation or corruption of children

Sexual abuse involves forcing or enticing a child or young person to take part in sexual activities, not necessarily involving a high level of violence, whether the child is aware of what is happening.

The activities may involve:

- Physical contact, including assault by penetration (for example rape or oral sex) or non-penetrative acts such as masturbation, kissing, rubbing and touching outside of clothing
- Non-contact activities, such as involving children in looking at, or in the production of, sexual images, watching sexual activities, encouraging children to behave in sexually inappropriate ways, or grooming a child in preparation for abuse (including via the internet)

Sexual abuse is not solely perpetrated by adult males. Women can also commit acts of sexual abuse, as can other children.

Neglect is the persistent failure to meet a child's basic physical and/or psychological needs, likely to result in the serious impairment of the child's health or development. Neglect may occur during pregnancy as a result of maternal substance abuse.

Once a child is born, neglect may involve a parent or carer failing to:

- Provide adequate food, clothing and shelter (including exclusion from home or abandonment)
- Protect a child from physical and emotional harm or danger
- Ensure adequate supervision (including the use of inadequate caregivers)
- Ensure access to appropriate medical care or treatment

It may also include neglect of, or unresponsiveness to, a child's basic emotional needs.

12. Specific Safeguarding Issues

This section is based on the advice in Annex B of Keeping Children Safe in Education – and has been adapted to reflect local context.

All members of staff receive training including: children's involvement in the court system, children with family members in prison, and county lines.

Peer on Peer is now known as Child on Child abuse - Allegations of abuse made against other pupils – (see KCSiE Part 5 for in depth information.)

All victims should be taken seriously, kept safe and never be made to feel like they are creating a problem for reporting abuse, sexual violence or sexual harassment.

In the event of the perpetrator and victim being in the same school, both parties will be kept safe and never made to feel like they have created a problem.

We recognise that children can abuse their peers. Abuse will never be tolerated or passed off as "banter", "just having a laugh" or "part of growing up".

We also recognise the gendered nature of child on child abuse. However, all child on child abuse is unacceptable and will be taken seriously.

All members of staff have received Sexual Harassment Training and are aware that the principles may be applied to Child on Child Abuse.

Most cases of pupils hurting other pupils will be dealt with under our school's relationships policy, but this child protection and safeguarding policy will apply to any allegations that raise safeguarding concerns. This might include where the alleged behaviour:

- Is serious, and potentially a criminal offence
- Could put pupils in the school at risk
- Is violent

- Involves pupils being forced to use drugs or alcohol
- Involves sexual exploitation, sexual abuse or sexual harassment, such as indecent exposure, sexual assault, up skirting or sexually inappropriate pictures or videos (including sexting)
- Annex B of KCSIE 2022 has full information.

If a pupil makes an allegation of abuse against another pupil:

- You must record the allegation and tell the DSL, but do not investigate it
- The DSL will contact the Local Authority Children’s Social Care team and follow its advice, as well as the police if the allegation involves a potential criminal offence
- The DSL will put a risk assessment and support plan into place for all children involved (including the victim(s), the child(ren) against whom the allegation has been made and any others affected) with a named person they can talk to if needed
- The DSL will contact the Children and Adolescent Mental Health Services (CAMHS), if appropriate

We will minimise the risk of child on child abuse by:

- Challenging any form of derogatory or sexualised language or behaviour, including requesting or sending sexual images
- Being vigilant to issues that particularly affect different genders – for example, sexualised or aggressive touching or grabbing towards female pupils, and initiation or hazing type violence with respect to boys
- Ensuring our curriculum helps to educate pupils about appropriate behaviour and consent
- Ensuring pupils know they can talk to staff confidentially by having an open door policy with pupils and parents and high presence of members of the Head’s Leadership Team at the beginning and end of the school day. Additional, the school runs a Nurture Room and pupils are aware that they can ask for support, or just someone to talk to at any time. Each year group has at least one teaching Assistant and they form close bonds with pupils, particularly those who are vulnerable so that they know that they can be approached with any worries or concerns.
- Ensuring staff are trained to understand that a pupil harming a peer could be a sign that the child is being abused themselves, and that this would fall under the scope of this policy

Sexting

Your responsibilities when responding to an incident

If you are made aware of an incident involving sexting (also known as ‘youth produced sexual imagery’), you must report it to the DSL immediately.

You must **not**:

- View, download or share the imagery yourself, or ask a pupil to share or download it. If you have already viewed the imagery by accident, you must report this to the DSL
- Delete the imagery or ask the pupil to delete it
- Ask the pupil(s) who are involved in the incident to disclose information regarding the imagery (this is the DSL’s responsibility)
- Share information about the incident with other members of staff, the pupil(s) it involves or their, or other, parents and/or carers
- Say or do anything to blame or shame any young people involved

You should explain that you need to report the incident and reassure the pupil(s) that they will receive support and help from the DSL.

Initial review meeting

Following a report of an incident, the DSL will hold an initial review meeting with appropriate school staff. This meeting will consider the initial evidence and aim to determine:

- Whether there is an immediate risk to pupil(s)
- If a referral needs to be made to the police and/or children's social care
- If it is necessary to view the imagery in order to safeguard the young person (in most cases, imagery should not be viewed)
- What further information is required to decide on the best response
- Whether the imagery has been shared widely and via what services and/or platforms (this may be unknown)
- Whether immediate action should be taken to delete or remove images from devices or online services
- Any relevant facts about the pupils involved which would influence risk assessment
- If there is a need to contact another school, college, setting or individual
- Whether to contact parents or carers of the pupils involved (in most cases parents should be involved)

The DSL will make an immediate referral to police and/or children's social care if:

- The incident involves an adult
- There is reason to believe that a young person has been coerced, blackmailed or groomed, or if there are concerns about their capacity to consent (for example owing to special educational needs)
- What the DSL knows about the imagery suggests the content depicts sexual acts which are unusual for the young person's developmental stage, or are violent
- The imagery involves sexual acts and any pupil in the imagery is under 13
- The DSL has reason to believe a pupil is at immediate risk of harm owing to the sharing of the imagery (for example, the young person is presenting as suicidal or self-harming)

If none of the above apply then the DSL, in consultation with the headteacher and other members of staff as appropriate, may decide to respond to the incident without involving the police or children's social care.

Further review by the DSL

If at the initial review stage, a decision has been made not to refer to police and/or children's social care, the DSL will conduct a further review.

They will hold interviews with the pupils involved (if appropriate) to establish the facts and assess the risks.

If at any point in the process there is a concern that a pupil has been harmed or is at risk of harm, a referral will be made to children's social care and/or the police immediately.

Informing parents

The DSL will inform parents at an early stage and keep them involved in the process, unless there is a good reason to believe that involving them would put the pupil at risk of harm.

Referring to the police

If it is necessary to refer an incident to the police, this will be done through contacting the local PCO, dialing 119 or 999 depending upon the severity of the incident. The Social Services Ghost line may also be used for advice based on individual incidents.

Recording incidents

All sexting incidents and the decisions made in responding to them will be recorded. The record-keeping arrangements set out in section 10 of this policy also apply to recording incidents of sexting. The school's PSHRE curriculum includes information regarding keeping children safe on line and sexting will be covered if appropriate with older pupils in Year 6 or possibly Year 5.

Female Genital Mutilation - If you discover that FGM has taken place or a pupil is at risk of FGM

The Department for Education's Keeping Children Safe in Education explains that FGM comprises *'all procedures involving partial or total removal of the external female genitalia, or other injury to the female genital organs.'*

FGM is illegal in the UK and a form of child abuse with long-lasting, harmful consequences. It is also known as 'female genital cutting', 'circumcision' or 'initiation'.

Any teacher who discovers (either through disclosure by the victim or visual evidence) that an act of FGM appears to have been carried out on a **pupil under 18** must immediately report this to the police, personally. This is a statutory duty, and teachers will face disciplinary sanctions for failing to meet it.

Unless they have been specifically told not to disclose, they should also discuss the case with the DSL and involve children's social care as appropriate.

Any other member of staff who discovers that an act of FGM appears to have been carried out on a **pupil under 18** must speak to the DSL and follow our local safeguarding procedures.

The duty for teachers mentioned above does not apply in cases where a pupil is *at risk* of FGM or FGM is suspected but is not known to have been carried out. Staff should not examine pupils.

Any member of staff who suspects a pupil is *at risk* of FGM or suspects that FGM has been carried out must speak to the DSL and follow our local safeguarding procedures.

The DSL will make sure that staff have access to appropriate training to equip them to be alert to children affected by FGM or at risk of FGM.

Section 7.3 of this policy sets out the procedures to be followed if a staff member discovers that an act of FGM appears to have been carried out or suspects that a pupil is at risk of FGM.

Indicators that FGM has already occurred include:

- A pupil confiding in a professional that FGM has taken place
- A mother/family member disclosing that FGM has been carried out
- A family/pupil already being known to social services in relation to other safeguarding issues

A girl:

- Having difficulty walking, sitting or standing, or looking uncomfortable
- Finding it hard to sit still for long periods of time (where this was not a problem previously)
- Spending longer than normal in the bathroom or toilet due to difficulties urinating
- Having frequent urinary, menstrual or stomach problems
- Avoiding physical exercise or missing PE
- Being repeatedly absent from school, or absent for a prolonged period
- Demonstrating increased emotional and psychological needs – for example, withdrawal or depression, or significant change in behaviour
- Being reluctant to undergo any medical examinations
- Asking for help, but not being explicit about the problem

- Talking about pain or discomfort between her legs

Potential signs that a pupil may be at risk of FGM include:

- The girl’s family having a history of practicing FGM (this is the biggest risk factor to consider)
- FGM being known to be practiced in the girl’s community or country of origin
- A parent or family member expressing concern that FGM may be carried out
- A family not engaging with professionals (health, education or other) or already being known to social care in relation to other safeguarding issues

A girl:

- Having a mother, older sibling or cousin who has undergone FGM
- Having limited level of integration within UK society
- Confiding to a professional that she is to have a “special procedure” or to attend a special occasion to “become a woman”
- Talking about a long holiday to her country of origin or another country where the practice is prevalent, or parents stating that they or a relative will take the girl out of the country for a prolonged period
- Requesting help from a teacher or another adult because she is aware or suspects that she is at immediate risk of FGM
- Talking about FGM in conversation – for example, a girl may tell other children about it (although it is important to consider the context of the discussion)
- Being unexpectedly absent from school
- Having sections missing from her ‘red book’ (child health record) and/or attending a travel clinic or equivalent for vaccinations/anti-malarial medication

The above indicators and risk factors are not intended to be exhaustive.

Honour Based Abuse (including Forced Marriage)

So-called ‘honour-based’ abuse (HBA) encompasses incidents or crimes committed to protect or defend the honour of the family and/or community, including FGM, forced marriage, and practices such as breast ironing.

Abuse committed in this context often involves a wider network of family or community pressure and can include multiple perpetrators.

All forms of HBA are abuse and will be handled and escalated as such. All staff will be alert to the possibility of a child being at risk of HBA or already having suffered it. If staff have a concern, they will speak to the DSL, who will activate local safeguarding procedures.

Forced Marriage

Forcing a person into marriage is a crime. A forced marriage is one entered without the full and free consent of one or both parties and where violence, threats, or any other form of coercion is used to cause a person to enter a marriage. Threats can be physical or emotional and psychological.

Staff will receive training around forced marriage and the presenting symptoms. We are aware of the ‘one chance’ rule, i.e. we may only have one chance to speak to the potential victim and only one chance to save them.

If a member of staff suspects that a pupil is being forced into marriage, they will speak to the pupil about their concerns in a secure and private place. They will then report this to the DSL.

The DSL will:

- Speak to the pupil about the concerns in a secure and private place
- Activate the local safeguarding procedures and refer the case to the local authority's designated officer
- Seek advice from the Forced Marriage Unit on 020 7008 0151 or fmf@fco.gov.uk
- Refer the pupil to an education welfare officer, pastoral tutor, learning mentor, or school counsellor, as appropriate

Child Criminal Exploitation

Child criminal exploitation (CCE) is a form of abuse where an individual or group takes advantage of an imbalance of power to coerce, control, manipulate or deceive a child into criminal activity, in exchange for something the victim needs or wants, and/or for the financial or other advantage of the perpetrator or facilitator, and/or through violence or the threat of violence.

The abuse can be perpetrated by males or females, and children or adults. It can be a one-off occurrence or a series of incidents over time and range from opportunistic to complex organised abuse.

The victim can be exploited even when the activity appears to be consensual. It does not always involve physical contact and can happen online. For example, young people may be trafficked, forced to work in cannabis factories, modern slavery, coerced into moving drugs or money across the country (county lines), involved in gangs and knife crime, forced to shoplift or pickpocket, or to threaten other young people.

Indicators of CCE can include a child:

- Appearing with unexplained gifts or new possessions
- Associating with other young people involved in exploitation
- Involved in gangs and knife crime
- Suffering from changes in emotional wellbeing
- Misusing drugs and alcohol
- Going missing for periods of time or regularly coming home late
- Regularly missing school or education
- Not taking part in education

If a member of staff suspects CCE, they will discuss this with the DSL. The DSL will trigger the local safeguarding procedures, including a referral to the local authority's children's social care team and the police, if appropriate.

Child Sexual Exploitation

Child sexual exploitation (CSE) is a form of abuse where an individual or group takes advantage of an imbalance of power to coerce, manipulate or deceive a child into sexual activity, in exchange for something the victim needs or wants and/or for the financial advantage or increased status of the perpetrator or facilitator. It may, or may not, be accompanied by violence or threats of violence.

The abuse can be perpetrated by males or females, and children or adults. It can be a one-off occurrence or a series of incidents over time and range from opportunistic to complex organised abuse.

The victim can be exploited even when the activity appears to be consensual. Children or young people who are being sexually exploited may not understand that they are being abused. They often trust their abuser and may be tricked into believing they are in a loving, consensual relationship.

CSE can include both physical contact (penetrative and non-penetrative acts) and non-contact sexual activity. It can also happen online. For example, young people may be persuaded or forced to share sexually explicit images of themselves, have sexual conversations by text, or take part in sexual activities using a webcam. CSE may also occur without the victim's immediate knowledge, for example through others copying videos or images.

In addition to the CCE indicators above, indicators of CSE can include a child:

- Having an older boyfriend or girlfriend
- Suffering from sexually transmitted infections or becoming pregnant

If a member of staff suspects CSE, they will discuss this with the DSL. The DSL will trigger the local safeguarding procedures, including a referral to the local authority's children's social care team and the police, if appropriate.

Children Missing from Education

A child going missing from education, particularly repeatedly, can be a warning sign of a range of safeguarding issues. This might include abuse or neglect, such as sexual abuse or exploitation or child criminal exploitation, or issues such as mental health problems, substance abuse, radicalisation, FGM or forced marriage.

There are many circumstances where a child may become missing from education, but some children are particularly at risk. These include children who:

- Are at risk of harm or neglect
- Are at risk of forced marriage or FGM
- Come from Gypsy, Roma, or Traveller families
- Come from the families of service personnel
- Go missing or run away from home or care
- Are supervised by the youth justice system
- Cease to attend a school
- Come from new migrant families

We will follow our procedures for unauthorised absence and for dealing with children who go missing from education, particularly on repeat occasions, to help identify the risk of abuse and neglect, including sexual exploitation, and to help prevent the risks of going missing in future. This includes informing the local authority if a child leaves the school without a new school being named and adhering to requirements with respect to sharing information with the local authority, when applicable, when removing a child's name from the admission register at non-standard transition points.

Staff will be trained in signs to look out for and the individual triggers to be aware of when considering the risks of potential safeguarding concerns which may be related to being missing, such as travelling to conflict zones, FGM and forced marriage.

If a staff member suspects that a child is suffering from harm or neglect, we will follow local child protection procedures, including with respect to making reasonable enquiries. We will make an immediate referral to the local authority children's social care team, and the police, if the child is suffering or likely to suffer from harm, or in immediate danger.

For further information: Children Missing Education statutory guidance for local authorities 2016
https://assets.publishing.service.gov.uk/government/uploads/system/uploads/attachment_data/file/550416/Children_Missing_Education_-_statutory_guidance.pdf

Missing pupils

Our procedures are designed to ensure that a missing child is found and returned to effective supervision as soon as possible. If a child goes missing, we will:

- Conduct a full systematic search of the school premises and grounds by members of SLT.
- Establish whether there are any witnesses.
- Contact parents.
- DSL will conduct a rapid dynamic assessment of the risk and decide whether to contact the police through 119 or 999 depending on the severity of the incident if it is felt that the child may be in immediate danger

Homelessness

Being homeless or being at risk of becoming homeless presents a real risk to a child's welfare.

The DSL and Deputy DSLs will be aware of contact details and referral routes into the local housing authority so they can raise/progress concerns at the earliest opportunity (where appropriate and in accordance with local procedures).

Where a child has been harmed or is at risk of harm, the DSL will also make a referral to children's social care.

Domestic Abuse

Children can witness and be adversely affected by domestic abuse and/or violence at home where it occurs between family members. In some cases, a child may blame themselves for the abuse or may have had to leave the family home as a result.

Exposure to domestic abuse and/or violence can have a serious, long-lasting emotional and psychological impact on children.

If police are called to an incident of domestic abuse and any children in the household have experienced the incident, the police will inform the key adult in school (usually the designated safeguarding lead) before the child or children arrive at school the following day. West Midlands police forces are part of [Operation Encompass](#)

The DSL will provide support according to the child's needs and update records about their circumstances.

Child on Child Sexual Violence and Sexual Harassment

Sexual violence and sexual harassment can occur between two children of any age and sex. It can also occur through a group of children sexually assaulting or sexually harassing a single child or group of children. Sexual violence and sexual harassment exist on a continuum and may overlap; they can occur online and face to face (both physically and verbally) and are never acceptable.

Responding to reports of sexual violence and sexual harassment

Reports of sexual violence and sexual harassment are likely to be complex and require difficult professional decisions to be made, often quickly and under pressure. Preplanning, effective training and effective policies will provide schools and colleges with the foundation for a calm, considered and appropriate response to any reports.

Ultimately, the school will make any decisions on a case-by-case basis, with the designated safeguarding lead (or a deputy) taking a leading role and using their professional judgement, supported by other agencies, such as children's social care and the police as required.

Up-skirting had been added into Sexual Harassment Section - **The Voyeurism (Offences) Act came into force on 12 April 2019 and has now been referenced**

Radicalisation and Extremism

- **Radicalisation** refers to the process by which a person comes to support terrorism and extremist ideologies associated with terrorist groups
- **Extremism** is vocal or active opposition to fundamental British values, such as democracy, the rule of law, individual liberty, and mutual respect and tolerance of different faiths and beliefs. This also includes calling for the death of members of the armed forces
- **Terrorism** is an action that:
 - Endangers or causes serious violence to a person/people;
 - Causes serious damage to property; or
 - Seriously interferes or disrupts an electronic system

The use or threat of terrorism must be designed to influence the government or to intimidate the public and is made for the purpose of advancing a political, religious or ideological cause.

Schools have a duty to prevent children from being drawn into terrorism. The DSL will undertake Prevent awareness training and make sure that staff have access to appropriate training to equip them to identify children at risk.

We will assess the risk of children in our school being drawn into terrorism. This assessment will be based on an understanding of the potential risk in our local area, in collaboration with our local safeguarding partners and local police force.

We will ensure that suitable internet filtering is in place and equip our pupils to stay safe online at school and at home.

There is no single way of identifying an individual who is likely to be susceptible to an extremist ideology. Radicalisation can occur quickly or over a long period.

Staff will be alert to changes in pupils' behaviour.

The government website [Educate Against Hate](#) and charity [NSPCC](#) say that signs that a pupil is being radicalised can include:

- Refusal to engage with, or becoming abusive to, peers who are different from themselves
- Becoming susceptible to conspiracy theories and feelings of persecution
- Changes in friendship groups and appearance
- Rejecting activities, they used to enjoy
- Converting to a new religion
- Isolating themselves from family and friends
- Talking as if from a scripted speech
- An unwillingness or inability to discuss their views
- A sudden disrespectful attitude towards others
- Increased levels of anger
- Increased secretiveness, especially around internet use
- Expressions of sympathy for extremist ideologies and groups, or justification of their actions
- Accessing extremist material online, including on Facebook or Twitter
- Possessing extremist literature
- Being in contact with extremist recruiters and joining, or seeking to join, extremist organisations

Children who are at risk of radicalisation may have low self-esteem or be victims of bullying or discrimination. It is important to note that these signs can also be part of normal teenage behaviour, staff should have confidence in their instincts and seek advice if something feels wrong.

If staff are concerned about a pupil, they will follow our reporting procedures including discussing their concerns with the DSL.

Staff should **always** act if they are worried.

If you have concerns about extremism

If a child is not suffering or likely to suffer from harm, or in immediate danger, where possible speak to the DSL first to agree a course of action.

If in exceptional circumstances the DSL is not available, this should not delay appropriate action being taken. Speak to a member of the senior leadership team and/or seek advice from local authority children's social care. Make a referral to local authority children's social care directly, if appropriate (see 'Referral' above). Inform the DSL or deputy as soon as practically possible after the referral.

Where there is a concern, the DSL will consider the level of risk and decide which agency to make a referral to. This could include [Channel](#), the government's programme for identifying and supporting individuals at risk of being drawn into terrorism, or the local authority children's social care team.

The Department for Education also has a dedicated telephone helpline, 020 7340 7264, which school staff and governors can call to raise concerns about extremism with respect to a pupil. You can also email counter.extremism@education.gov.uk. Note that this is not for use in emergency situations.

In an emergency, call 999 or the confidential anti-terrorist hotline on 0800 789 321 if you:

- Think someone is in immediate danger
- Think someone may be planning to travel to join an extremist group
- See or hear something that may be terrorist-related

Mental Health - If you have a mental health concern

Mental health problems can, in some cases, be an indicator that a child has suffered or is at risk of suffering abuse, neglect or exploitation.

Staff will be alert to behavioural signs that suggest a child may be experiencing a mental health problem or be at risk of developing one.

If you have a mental health concern about a child that is also a safeguarding concern, take immediate action.

If you have a mental health concern that is **not** also a safeguarding concern, speak to the DSL to agree a course of action.

The school has a strong system in place to support any and all pupils who are displaying signs of concerns regarding mental health. The new PSHRE curriculum is robust and addresses mental health and well-being in depth. Additional resources to support pupils with mental health issues have been purchased by the school and there are systems in place to ensure that all concerns are quickly referred on to the school's nurture lead for help and support. The school has a senior mental health lead, the headteacher, and a mental health lead, the assistant headteacher (SENDCO).

The school Nurse, Tracey Smith, also comes into school every fortnight and will work with children who are giving rise to concern by undertaking First Steps with them.

The school has a good relationship with CAMHS and the SENDCO is proactive in implementing and chasing up referrals to their service.

Areas with particular risk

Due consideration is also given to:

- Physical intervention
- Personal/Intimate care
- Changing for PE and swimming
- 1:1 working
- Overnight stays
- Host families
- Private Fostering
- Pupils being taught off site
- Elective Home Education (EHE)
- Children persistently absent or have episodes of missing
- Young carers
- Children of parents with mental health issues
- Children and the court system
- Children with family members in prison

Individual Risk Assessments are carried out and agreed with parents in the event of a risk being identified.

13. LGBTQ+ pupils

Some pupils may be vulnerable due to their sexual orientation or gender identity, either because they are subject to homophobic, bi-phobic or transphobic bullying or because of negative responses from parents/carers or others, which may result in increased risk of self-harm, suicide or homelessness.

Several studies also evidence that LGBTQ+ young people may be at increased risk of becoming victims of CSE.

Schools should therefore ensure that they are aware of the increased risk factors and know how to access appropriate support for these young people when required

Members of staff have all received LGBTQ+ awareness training

14. Online Safety

Please refer to the school's on-line safety policy. Your policy should include your setting's use of filters and monitoring, links, etc. Further information may be found at...

https://assets.publishing.service.gov.uk/government/uploads/system/uploads/attachment_data/file/674416/Searching_screening_and_confiscation.pdf

Pupils will also receive on-line safety training through Computing and PSHRE lessons from Reception through to Year 6 using the school skill building curriculum.

https://assets.publishing.service.gov.uk/government/uploads/system/uploads/attachment_data/file/811796/Teaching_online_safety_in_school.pdf

15. Named Designated Person for Children in Care (CiC)

The designated person is the headteacher. They aim to work in partnership with the Virtual School Coordinator on how funding can best support the progress of a CiC

We will ensure that staff have the skills, knowledge and understanding to keep Children in Care and previous Children in Care safe. We will ensure that:

- Appropriate staff have relevant information about Children in Care's looked after legal status, contact arrangements with birth parents or those with parental responsibility, and care arrangements
- The DSL has details of children's social workers and relevant virtual school heads

We have appointed a designated teacher, Mrs Claire Williams, who is responsible for promoting the educational achievement of Children in Care and previous Children in Care in line with [statutory guidance](#).

The designated teacher is appropriately trained and has the relevant qualifications and experience to perform the role.

- The designated teacher is the DSL and ensures that any safeguarding concerns regarding Children in Care and previous Children in Care are quickly and effectively responded to
- The designated teacher will work with virtual school heads to promote the educational achievement of, Children in Care and previous Children in Care, including discussing how pupil premium plus funding can be best used to support CiC and meet the needs identified in their personal education plans

16. Named Virtual Head – Andrew Wright

Andrew.wright@dudley.gov.uk

17. Children with Special Educational Needs and Disabilities

We recognise that pupils with special educational needs (SEN) and disabilities can face additional safeguarding challenges. Additional barriers can exist when recognising abuse and neglect in this group, including:

- Assumptions that indicators of possible abuse such as behaviour, mood and injury relate to the child's disability without further exploration
- Pupils being more prone to peer group isolation than other pupils
- The potential for pupils with SEN and disabilities being disproportionately impacted by behaviours such as bullying, without outwardly showing any signs
- Communication barriers and difficulties in overcoming these barriers

We offer extra pastoral support for pupils with SEN and disabilities, as identified in their Individual Care Plans and Provision Maps.

18. Safer Recruitment procedure

Please refer to the school's safer Recruitment Policy for additional information.

At least one person conducting any interview for a post at the school will have undertaken safer recruitment training. This will cover, as a minimum, the contents of the Department for Education's statutory guidance, Keeping Children Safe in Education, and will be in line with local safeguarding procedures.

We will record all information on the checks carried out in the school's single central record (SCR). Copies of these checks, where appropriate, will be held in individuals' personnel files. We follow requirements and best practice in retaining copies of these checks, as set out below.

New staff

When appointing new staff, we will:

- › Verify their identity
- › Obtain (via the applicant) an enhanced Disclosure and Barring Service (DBS) certificate, including barred list information for those who will be engaging in regulated activity (see definition below). We will not keep a copy of this for longer than 6 months
- › Obtain a separate barred list check if they will start work in regulated activity before the DBS certificate is available
- › Verify their mental and physical fitness to carry out their work responsibilities
- › Verify their right to work in the UK. We will keep a copy of this verification for the duration of the member of staff's employment and for 2 years afterwards
- › Verify their professional qualifications, as appropriate
- › Ensure they are not subject to a prohibition order if they are employed to be a teacher
- › Carry out further additional checks, as appropriate, on candidates who have lived or worked outside of the UK, including (where relevant) any teacher sanctions or restrictions imposed by a European Economic Area professional regulating authority, and criminal records checks or their equivalent

We will ensure that appropriate checks are carried out to ensure that individuals are not disqualified under the 2018 Childcare Disqualification Regulations and Childcare Act 2006. Where we take a decision that an individual falls outside of the scope of these regulations and we do not carry out such checks, we will retain a record of our assessment on the individual's personnel file. This will include our evaluation of any risks and control measures put in place, and any advice sought.

We will ask for written information about previous employment history and check that information is not contradictory or incomplete.

We will seek references on all short-listed candidates, including internal candidates, before interview. We will scrutinise these and resolve any concerns before confirming appointments. The references requested will ask specific questions about the suitability of the applicant to work with children.

Regulated activity means a person who will be:

- › Responsible, on a regular basis in a school or college, for teaching, training, instructing, caring for or supervising children; or
- › Carrying out paid, or unsupervised unpaid, work regularly in a school or college where that work provides an opportunity for contact with children; or
- › Engaging in intimate or personal care or overnight activity, even if this happens only once and regardless of whether they are supervised or not

Existing staff

If we have concerns about an existing member of staff's suitability to work with children, we will carry out all the relevant checks as if the individual was a new member of staff. We will also do this if an individual moves from a post that is not regulated activity to one that is.

We will refer to the DBS anyone who has harmed, or poses a risk of harm, to a child or vulnerable adult where:

- › We believe the individual has engaged in relevant conduct; or
- › The individual has received a caution or conviction for a relevant offence, or there is reason to believe the individual has committed a listed relevant offence, under the Safeguarding Vulnerable Groups Act 2006 (Prescribed Criteria and Miscellaneous Provisions) Regulations 2009; or

- The 'harm test' is satisfied in respect of the individual (i.e. they may harm a child or vulnerable adult or put them at risk of harm); and
- The individual has been removed from working in regulated activity (paid or unpaid) or would have been removed if they had not left

Agency and third-party staff

We will obtain written notification from any agency or third-party organisation that it has carried out the necessary safer recruitment checks that we would otherwise perform. We will also check that the person presenting themselves for work is the same person on whom the checks have been made.

Contractors

We will ensure that any contractor, or any employee of the contractor, who is to work at the school has had the appropriate level of DBS check (this includes contractors who are provided through a PFI or similar contract). This will be:

- An enhanced DBS check with barred list information for contractors engaging in regulated activity
- An enhanced DBS check, not including barred list information, for all other contractors who are not in regulated activity but whose work provides them with an opportunity for regular contact with children

We will obtain the DBS check for self-employed contractors.

We will not keep copies of such checks for longer than 6 months.

Contractors who have not had any checks will not be allowed to work unsupervised or engage in regulated activity under any circumstances.

We will check the identity of all contractors and their staff on arrival at the school.

For self-employed contractors such as music teachers or sports coaches, we will ensure that appropriate checks are carried out to ensure that individuals are not disqualified under the 2018 Childcare Disqualification Regulations and Childcare Act 2006. Where we decide that an individual falls outside of the scope of these regulations and we do not carry out such checks, we will retain a record of our assessment. This will include our evaluation of any risks and control measures put in place, and any advice sought.

Trainee/student teachers

Where applicants for initial teacher training are salaried by us, we will ensure that all necessary checks are carried out.

Where trainee teachers are fee-funded, we will obtain written confirmation from the training provider that necessary checks have been carried out and that the trainee has been judged by the provider to be suitable to work with children.

In both cases, this includes checks to ensure that individuals are not disqualified under the 2018 Childcare Disqualification Regulations and Childcare Act 2006.

Volunteers

We will:

- Never leave an unchecked volunteer unsupervised or allow them to work in regulated activity
- Obtain an enhanced DBS check with barred list information for all volunteers who are new to working in regulated activity
- Carry out a risk assessment when deciding whether to seek an enhanced DBS check without barred list information for any volunteers not engaging in regulated activity. We will retain a record of this risk assessment

- › Ensure that appropriate checks are carried out to ensure that individuals are not disqualified under the 2018 Childcare Disqualification Regulations and Childcare Act 2006. Where we decide that an individual falls outside of the scope of these regulations and we do not carry out such checks, we will retain a record of our assessment. This will include our evaluation of any risks and control measures put in place, and any advice sought

Governors

All governors will have an enhanced DBS check without barred list information.

They will have an enhanced DBS check with barred list information if working in regulated activity.

All governors will also have a section 128 check (as a section 128 direction disqualifies an individual from being a maintained school governor).

- › Other checks deemed necessary if they have lived or worked outside the UK

Staff working in alternative provision settings

Where we place a pupil with an alternative provision provider, we obtain written confirmation from the provider that they have carried out the appropriate safeguarding checks on individuals working there that we would otherwise perform.

Adults who supervise pupils on work experience

When organising work experience, we will ensure that policies and procedures are in place to protect children from harm.

We will also consider whether it is necessary for barred list checks to be carried out on the individuals who supervise a pupil under 16 on work experience. This will depend on the specific circumstances of the work experience, including the nature of the supervision, the frequency of the activity being supervised, and whether the work is regulated activity.

Pupils staying with host families

Where the school decides for pupils to be provided with care and accommodation by a host family to which they are not related (for example, during a foreign exchange visit), we will request enhanced DBS checks with barred list information on those people.

Where the school is organising such hosting arrangements overseas and host families cannot be checked in the same way, we will work with our partner schools abroad to ensure that similar assurances are undertaken prior to the visit.

19. Procedure for dealing with Allegations about Staff - Concerns about a staff member, supply teacher or volunteer

If you have concerns about a member of staff (including a supply teacher or volunteer), or an allegation is made about a member of staff (including a supply teacher or volunteer) posing a risk of harm to children, speak to the headteacher. If the concerns/allegations are about the headteacher, speak to the chair of governors.

Staff should also be familiar with the Whistleblowing Policy and this is available for all staff in the Staff Room. Procedure for dealing with complaints and allegations about staff – See Part Four of KCSiE

All members of staff are familiar with the LADO and this was included in the Safeguarding Training delivered in September 2022.

Schools must work with other agencies to investigate when a member of staff has **“behaved or may have behaved in a way that indicates they may not be suitable to work with children”**

Further guidance on how schools and colleges should handle allegations against supply staff & volunteers, has been added and handled accordingly.

The responsibility to manage allegations about supply teachers is made clear, so they still ensure allegations are dealt with appropriately when they are not the employer. Schools cannot simply cease to use this teacher. Processes should be developed to manage this akin to the disciplinary procedure and the school should advise supply agencies of its process for managing allegations.

Any concerns about the conduct of other adults in the school should be taken to the Headteacher

Procedure for dealing with complaints and allegations about the headteacher or proprietor

Concerns about the Headteacher should go to the Chair of Governors. (In proprietor-led independent schools, concerns about the proprietor(s) directly to the local authority Designated Officer (LADO).

LADO is Yvonne Nelson-Brown

The policy should be clear about the steps the DSL should take in order to refer a concern outside the school, e.g. a social services enquiry or to LADO.

An up-to-date list of relevant names and contacts details for LADO should be included in the policy.

The headteacher/chair of governors will then follow the procedures:

Where appropriate, the school will inform Ofsted of the allegation and actions taken, within the necessary timescale.

20. Whistleblowing

- Please refer to the school's Whistleblowing Policy.

Early years providers should also note the requirements set out in paragraph 3.75 of the statutory framework for the Early Years Foundation Stage; you may wish to cover these here if not already covered in a separate policy.

21. Safeguarding in the Curriculum

Through the school's building skills curriculum, all pupils will receive age and developmental appropriate advice on how to keep themselves safe whilst growing up and through into their adult lives through a range of different curriculum subjects.

This includes through the recognition of risk and risk taking, the school's Values and the school's PSHRE curriculum.

22. Special Circumstances

- Further information may be found in the school's policies for
 - Behaviour
 - Staff [behaviour/code of conduct]
 - Complaints
 - Health and safety
 - Attendance
 - Online safety
 - Equality
 - Sex and relationship education
 - First aid
 - Curriculum
 - Designated teacher for looked-after and previously looked-after children
 - Privacy notices

- › GDPR
- › Whistleblowing
- › Safer Recruitment
- › Anti-bullying
- › IT / Acceptable Use policy
- › Collecting children

3. A new system is in place for staff and visitors to check into and out of the school buildings.

All visitors will be issued with a photo ID badge stating their name and purpose of visit.

All visitors will be required to verify their identity to the satisfaction of staff and to leave their belongings, including their mobile phone(s), in a safe place during their visit.

If the visitor is unknown to the setting, we will check their credentials and reason for visiting before allowing them to enter the setting. Visitors should be ready to produce identification.

Visitors to the school who are visiting for a professional purpose, such as educational psychologists and school improvement officers, will be asked to show photo ID and:

- › Will be asked to show their DBS certificate, which will be checked alongside their photo ID; or
- › The organisation sending the professional, such as the LA or educational psychology service, will provide prior written confirmation that an enhanced DBS check with barred list information has been carried out

All other visitors, including visiting speakers, will always be accompanied by a member of staff. We will not invite into the school any speaker who is known to disseminate extremist views and will carry out appropriate checks to ensure that any individual or organisation using school facilities is not seeking to disseminate extremist views or radicalise pupils or staff.

4. If a child is not collected at the end of the session/day, we will:

Contact parents or other emergency contact.

Place the child in the School's after school care provision.

Ensure that a member of SLT remains on the school site or is contactable via phone in the event that the child is not collected.

If the child has still not been collected and no contact has been made with parents or emergency contact numbers, then Social Services will be contacted and advice taken with regard to the child. The DSL or DSL Deputy will return to the school and wait for advice with the manager of the ASC.